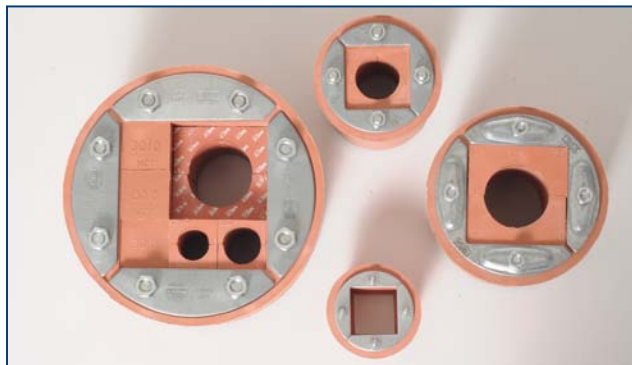




## SOLUTIONS FOR PENETRATIONS: ZEMENTOL MCT passage for cables

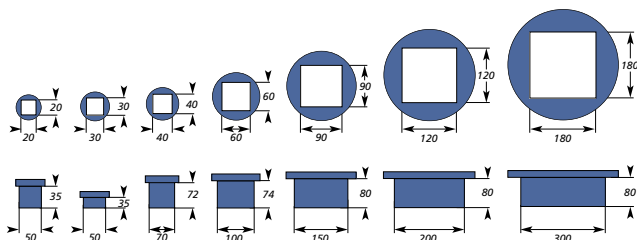


### Description:

- ZEMENTOL MCT passages for cables have a round frame and are used to waterproof round service penetrations like core holes or pipe sleeves. Specially produced, on-demand frames can be used for rectangular profiles.
- The ZEMENTOL MCT frame can be delivered in seven standard sizes. The waterproofing plugs are delivered either for the passage of cables or as solid blocks (which can be changed to receive future cable passages).
- An open-sided version of the ZEMENTOL MCT is available for situations where the cables are already in place.
- The ZEMENTOL MCT are very flexible and easy to install. They can be used for the passage of individual cables as well as for several hundred cables or tubes.
- The passages are made out of synthetic rubber that fits very precisely and thus is very resistant to temperature variations, pressure (up to 2bar), chemicals and vibrations.

### Material and components:

- Synthetic rubber (Lycron).
- All metal parts are galvanized or made out of stainless steel.



product type	internal diameter (in mm)
ZEMENTOL RGP 50	50
ZEMENTOL RGP 70	70
ZEMENTOL RGP 100	100
ZEMENTOL RGP 150	150
ZEMENTOL RGP 200	200

### Installation:

- For the installation of the ZEMENTOL MCT there is no need for special tools. All parts are self-sliding.
- After defining the diameter of the passage to be waterproofed the tolerance has to be verified (+2mm, -0mm, corresponding to the ZEMENTOL MCT external diameter). The frame is placed in the opening and positioned without using a lubricant.
- After checking that the inner space of the component is clean the cables are installed. The thickest cables are placed on the lower edge of the frame. The plugs are then inserted. The screws are tightened, until about 12mm of the thread become visible.

