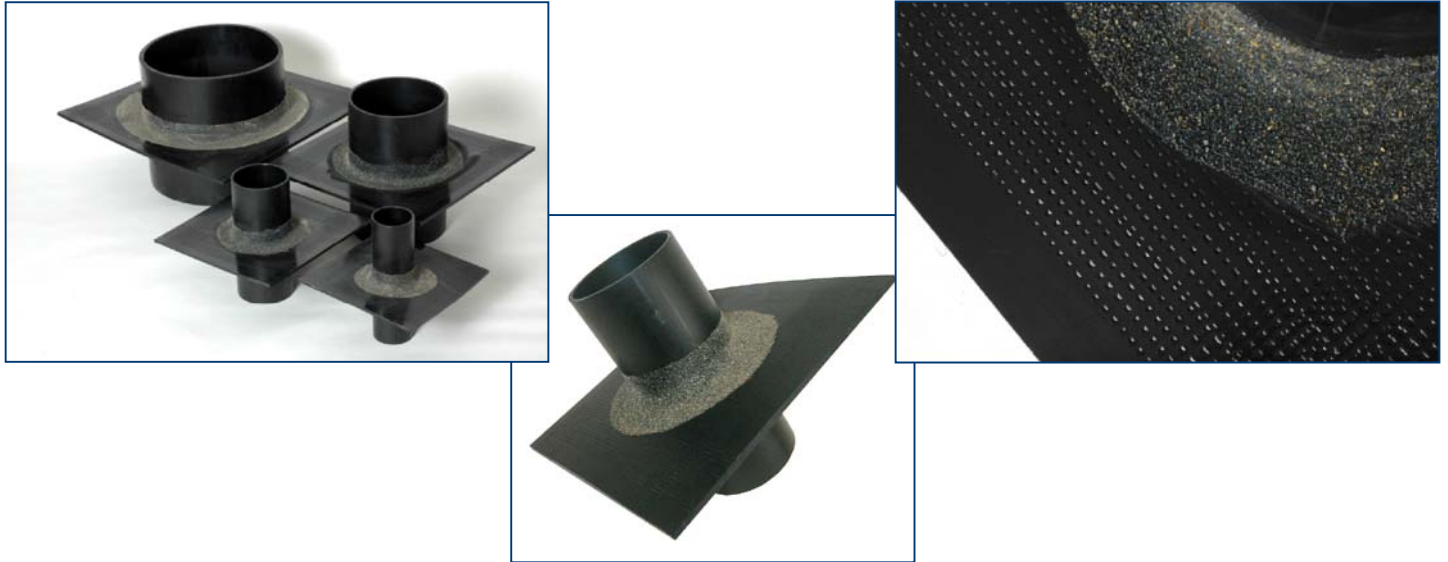




SOLUTIONS FOR PENETRATIONS: ZEMENTOL GRD pipe penetration



Size:

product type	nominal diameter (in mm)	size of flange (in mm)
ZEMENTOL GRD 50	50	250 x 250
ZEMENTOL GRD 56	56	250 x 250
ZEMENTOL GRD 75	75	250 x 250
ZEMENTOL GRD 110	110	300 x 300
ZEMENTOL GRD 125	125	300 x 300
ZEMENTOL GRD 160	160	400 x 400
ZEMENTOL GRD 200	200	400 x 400
ZEMENTOL GRD 250	250	450 x 450
ZEMENTOL GRD 315	315	500 x 500

Normal length 250 or 300mm (special length on demand).

Description:

- ZEMENTOL GRD is a pipe made out of HDPE plastic material, with a welded flange for passages through slabs, decks and walls. The flange is covered with epoxy resin and coated with quarry sand.
- For connection with a pipe collar to metal and plastic pipes, polystyrene rings of the appropriate size must be attached.
- Optimal bond with the waterproof concrete.
- Can be used for the installation of ZEMENTOL MCT and ZEMENTOL RRD modular seals.

Material and components:

- HDPE-tube with welded flange.

Installation:

- Walls: the ZEMENTOL GRD are fixed to the shutter board and encased in the concrete. Polystyrene is used when placing concrete. After removing the shutters, the polystyrene is withdrawn and the piping installed.
- Slabs and decks: the ZEMENTOL GRD are installed in a position to leave a minimum distance of 10cm between the flange and the surface of the waterproof concrete in order to ensure sufficient concrete coverage. When the ZEMENTOL GRD is placed in a position overlapping the concrete surface or when the ZEMENTOL GRD is used with a sleeve pipe, polystyrene can be dispensed with completely.